



MALSCE Webinar Series

Rising Tides & Changing Waters: NOAA's Plan to Update the National Tidal Datum Epoch

Friday, August 23, 2024

12:00 PM - 1:00 PM

This Zoom Video Webinar will be recorded

Maintained by NOAA's Center for Operational Oceanographic Products and Services (CO-OPS), the National Tidal Datum Epoch (NTDE) is the collection of water level observations over a 19-year period to generate a set of tidal datums. NTDE incorporates data from 2,000+ coastal water level stations. Updating this reference period will ensure the nation's tidal datums are based on recent data and provides a common reference frame to account for long-term effects of land movement, sea level rise and changes in tidal constituents. Accurate tidal datums are critical for federal, state, and private-sector coastal zone activities, including navigation, storm warning, and marine boundary determination.

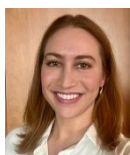
After 2026, CO-OPS will replace the existing 1983-2001 NTDE. The new 2002-2020 NTDE will include the CO-OPS repository of permanent real-time and historic stations with available data. New datum automation procedures will generate new NTDE products more efficiently to deliver the update on schedule.

Speakers



Alexis Sluder, Communications and Outreach Specialist, IBSS Corp.

Alexis Sluder is a communications and outreach specialist under contract to NOAA's Center for Operational Oceanographic Products and Services (CO-OPS), supporting the National Tidal Datum Epoch and the International Great Lakes Datum.



Katherine Fitzenreiter, Oceanographer, NOAA

Katie Fitzenreiter is an oceanographer at NOAA's National Ocean Service within the Center for Operational Oceanographic Products and Services (CO-OPS). Her work primarily focuses on the computation, analysis, and maintenance of tidal & geodetic datums, and related products.

Registration Information

Registration Fees: \$55/person, \$110/up to three people, \$165/up to five people for MALSCE members* and \$85/person, \$170/up to three people, \$255/up to five people for non-members.

For group registrations the applicable registration fee will be determined by the membership status of the majority of registrants. Please note that a recording of this webinar will be made available for viewing for a 60-day period. By registering to participate in this webinar you are granting MALSCE permission to record any questions you ask.

* Members of CALS, MSLS, NHLA, NYSAPLS, RISPLS, and VSLS can attend for the MALSCE member rate.

Registration Deadline: Wednesday, August 21, 2024. [Click here](#) to register to participate in this webinar and pay via Visa, MasterCard, or American Express. To register online at the MALSCE member rate, login using your MALSCE assigned username and password. If you do not know your member login information call 617/227-5551. You can also complete the registration form below and register via email, fax, or regular mail. Email or fax your registration form with credit card information to malsce@engineers.org or 617/227-6783, respectively. Mail your registration with credit card information or a check (payable to "MALSCE") to: MALSCE, One Walnut Street, Boston, MA 02108. Group registrations can also be made via email, fax, or

mail. To register a group via email, fax, or mail, download the [MALSCE Webinar Group Registration Form](#) and follow the submission instructions. Registrations are processed on a first-come, first-served basis. No refunds will be given after the Wednesday, August 21, 2024, registration deadline. Registrants who fail to login to the webinar will be billed. This webinar is offered for the benefit of MALSCE members and other interested registrants. Anyone who is discovered viewing this webinar without having registered to do so will be billed the appropriate registration fee.

Continuing Education

This seminar is worth one professional development hour (subject to state-specific exclusions; seek clarification from appropriate state authorities). All webinar registrants will receive a certificate of participation after the webinar. Please complete the appropriate registration form with your legal name, address, and other contact information so that you will be properly identified on the certificate.

Tax Information

Expenses incurred for education undertaken to maintain and improve professional skills (including travel, meals, and lodging) may be tax-deductible.

Individual Registration Form **Rising Tides & Changing Waters: NOAA’s Plan to Update the National Tidal Datum Epoch** Friday, August 23, 2024

Registrant Information: For group registrations, please complete and return a [Group Registration Form](#).

Name: _____
Organization (if applicable): _____
Address: _____
City: _____ State: _____ Zip Code: _____
Phone: _____ Fax: _____ Email: _____

Registration Fees

\$55 MALSCE Member* \$85 Non MALSCE Member

* Members of CALS, MSLS, NHLSA, NYSAPLS, RISPLS and VSLS can attend for the member rate. Please check the appropriate box below:

CALS MSLS NHLSA NYSAPLS RIPLS VSLS

Total Amount Enclosed: _____

Make checks payable to “MALSCE” and mail with completed form to: MALSCE, One Walnut Street, Boston, MA 02108-3616

Or pay with (Check one): Visa Master Card American Express

Name on card: _____
Card Number: _____
Expiration Date: _____ Security Code: _____
Billing Address: _____
City: _____ State: _____ Zip: _____
Signature: _____

- Registration is processed on a first-come, first-served basis. Registration deadline is Wednesday, August 21, 2024. No refunds will be given after this date. Registrants who fail to login will be billed.
- Questions? Call 617/227-5551